

Baltra Island Airport & Santa Cruz Island

We arrive at Baltra airport and then we take you to the Itabaca Channel to take a ferry across to Santa Cruz Island. A 30-minute bus ride takes us to a restaurant in the highlands of Santa Cruz Island to enjoy lunch, and then continue to Puerto Ayora. Depending on local weather conditions up in the highlands, we may include a short hike which will be a great introduction to some Galapagos wildlife. Our Expedition Team will advise accordingly.

Note: Please dress with comfortable shoes, clothes and anything you need during the excursion as you will go on board Yacht Isabela II and the end of the day.

Puerto Ayora and the Charles Darwin Research Station

After driving down from the highlands, we visit the Charles Darwin Research Station and the giant tortoise pens within an impressive giant prickly-pear cactus forest home to many land birds. These are the headquarters of scientific investigation, conservation and the National Park administration. Late afternoon we stroll along the main street of Puerto Ayora before embarking on Yacht Isabela II. We review the expeditions plan for next day, and enjoy the Captain's welcome cocktail and dinner.

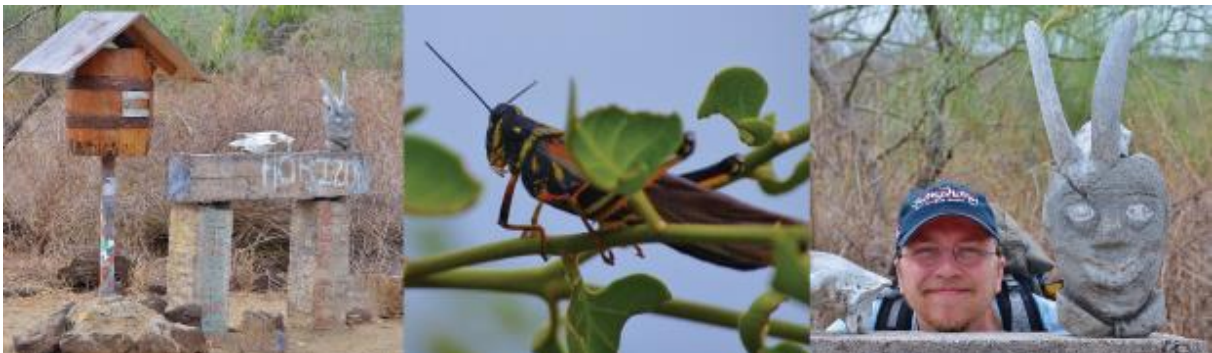


Day 2 September 09- FLOREANA

(B/L/D)

Post Office Bay & Baroness Cove (Floreana Island)

After breakfast, we land at Post Office Bay to visit the historic barrel that has served as an informal post office in the archipelago for over two centuries. Snorkelling off the beach.



Punta Cormorant (Floreana Island)

Our visit to Punta Cormorant takes in an olivine-crystal beach for an easy walk by a brackish water lagoon where bird species like stilts and flamingos may be observed. On the other side of the island, we come to a white-sand beach where sea turtles come out at night to nest.

Snorkeling will happen at lovely "Champion Islet" site, or ride in the panga or glass-bottom boat.



Day 3 September 10 - ESPAÑOLA

(B/L/D)

Punta Suarez (Española Island)

Our morning outing at Punta Suarez provides an exciting walk on lava/boulder terrain to visit its unique sea bird colonies, including the waved albatrosses (April - January), boobies, swallow-tail gulls, mockingbirds, and the famous "blowhole". Also, look for red-green-black marine iguanas. Back on board for lunch.

Gardner Bay (Española Island)

In the afternoon, we set down at this beautiful, white coral beach for a short walk to observe Galapagos sea lions, finches, maybe a hawk or just enjoy the beach. There is great snorkelling in this area, or else there's time to kayak, or enjoy the glass-bottom boat. The turquoise colour of the waters at this location will be a favourite to photograph.



Day 4 September 11 - SAN CRISTOBAL

(B/L/D)

Monday: Punta Pitt (San Cristobal Island)

In the morning, we land on the eastern tip of the island. The trail that ascends from the beach provides spectacular views of the shoreline and is the only site in the Galapagos where the three species of boobies can be found together, joined by the two frigatebird species plus a colony of bachelor sea lions. After the walk, if conditions are favourable, there is a chance to swim, kayak or snorkel from the beach or hop onto the panga for a ride along the coast. Cerro Brujo (San Cristobal Island)

In the afternoon, following lunch on board, we set out on a panga ride along the shores of tuff-stone layers which take us to Cerro Brujo's expansive, white coraline beach, great for walking, with rewarding birdwatching including good views of both sea and shore birds. Also, keep your eyes open for Galapagos sea lions. These are the same shores that Charles Darwin walked upon, back in September 1835. After the walk, there is a chance to swim and snorkel.



Day 5 September 12 - SAN CRISTOBAL

(B/-/-)

Tuesday: Puerto Baquerizo Moreno (San Cristobal- Chatham Island)

After breakfast, we depart to the pier and airport for our flight back to the mainland.

NOTES

Please remember that the exact route and programme may vary according to weather and ocean conditions and the wildlife we encounter. Our Expedition Team is in charge of planning the daily activities and logistics involved. It's also subject to change without previous notice due mainly to readjustment of the National Park policies and regulations.

For accessing the different visitor sites, our skiffs will bring us ashore where two types of landing are expected:

Dry landing: Guests step from the panga (dinghy/skiff) onto rocks or a small man-made jetty.

Wet landing: As the skiff edges onto a sandy beach, guests gently step into small breakers and wade ashore.

Flight Information

Please keep in mind that this cruise operates with the following flights:

SOUTHERN ISLANDS 5D/4N FRIDAY TO TUESDAY	OUTBOUND	INBOUND
	FLIGHT XL1411 UIO - GYE - BAL	FLIGHT XL1418 SCY - GYE - UIO
	DEPARTS QUITO 08:05	DEPARTS SAN CRISTÓBAL GPS TIME 13:45
	DEPARTS GUAYAQUIL 09:40	ARRIVES GUAYAQUIL 16:35
	ARRIVES BALTRA 10:40 GPS TIME	ARRIVES QUITO 18:10

RATES

NET RATES PER PERSON IN US DOLLARS FOR BUYERS ONLY:			SGL Accomodation	DBL Accomodation
Date	Service	Description	SGL	DBL
Fri. Sept 08 to Tue. Sept 12	PRE-CRUISE	5D/4N Southern Islands cruise onboard Yacht Isabela II	US\$ 500.00	US\$ 500.00

LIMITED SPACES AVAILABLE

Additional fees involved net per person		Net p/ adult
TAXGPSF **	Galapagos National Park (Foreigners)	100.00
TAXGPSING **	Ingala-Transit Control Card Galapagos National Park	20.00
GBALSOJ**	Ticket Guayaquil-Baltra-San Cristobal-Guayaquil (Rt) Adult International	483.80
UBALSGOJ **	Ticket Quito-Baltra-San Cristobal-Guayaquil (Rt) Adult International	498.03

**rates subject to change without previous notice

INCLUDED

Accomodations
 All meals
 Island sightseeing
 Specialized lectures
 Naturalist guides
 Snorkelling gear
 Internet (connections are intermittent and low-bandwidth)
 Medical care onboard (not cost of medication)
 Taxes
 Transfers in the Islands
 Shared transfers from main hotels in Quito (Casa Gangotena, Hilton Colon, Mercure, Sheraton, Marriott, Dann Carlton; for Casa Gangotena, a further feeder service is provided to/from Hilton Colón, this service does not have additional cost.) and in Guayaquil (Hilton Colon, Oro Verde, Sheraton, Wyndham) to airport for flights to / from Galapagos are

NOT INCLUDED

Galapagos National park entrance fee \$100 per person
 Ingala Transit control card \$20.00 per person
 Personal expenses
 Wet Suits available for rent \$20.74 for 5-day expeditions
 Air transportation to/from the Galapagos and airport taxes (subject to change without previous notice)
 Alcoholic and non-alcoholic beverages
 Gratuities
 Gifts and additional services

CONTACT INFORMATION

Name: Veronica Rosero

E-mail: vrosero@metropolitan-touring.com

Phone number: (593-2) 298-8300 ext:3101